



Open Evening 2025

Welcome to Aston All Saints




Meet the team

Who are we?

- Aston All Saints C of E is a church school, part of Diocese of Sheffield Multi Academy Trust.
- The school joined the academy trust in 2013 as one of the first schools in the now 20 school trust.
- In 2025/6, the school has 175 pupils on role.
- As a Church of England Primary School, church links locally and with Sheffield Diocese are strong.
- However we are a church school serving the diverse community, we are not a faith school
- This means 50% of our RE curriculum is Christianity, the remaining 50% covers world religions and humanist viewpoints
- Aston All Saints C of E Primary School was last inspected in 2022 when it was judged to be a good school.
- The last SIAMS inspection took place in January 2018, also judging school to be 'good'.
- Absence and persistent absence of pupils are both in the lowest % of all schools. Persistent absence is well below NA
- We proudly opened our Nursery provision spaces in September 2025.
- The school had changes in leadership from September 2021 with further changes in Summer of 2022 & November 2023. The Executive Head retired in 2024
- Mrs Webster has therefore been Head of school from 2023 and stand alone Headteacher from spring 2024, committed to ensuring stability and improvement



- 
- Families of pupils at Aston All Saints are supportive and aspirational for their children.
 - The number of pupils with disabilities and/or special educational needs (SEND) and supported at school action level has risen to be slightly above average at 20%.
 - Typically, children arrive in our Early Years class from a range of different early year's settings.
 - The school currently has an even split of male/female pupils
 - The school currently has pupils from a range of 8 different ethnicities on roll
 - Children typically transition to Aston Academy or Wales High after completion of Key Stage 2 (y6).





The Aston Vision

- At our primary school, we are committed to fostering an inclusive and nurturing environment rooted in the principles of the golden rule: "Do unto others as you would have them do unto you."
- Inspired by the parable of the Good Samaritan, we strive to instill in our children the christian and British values.
- We believe that these virtues are the cornerstone of a thriving community, empowering our students to appreciate and celebrate the diverse backgrounds and experiences of their peers.
- Through engaging learning experiences and collaborative projects, we encourage our children to practice kindness in their daily interactions, promoting a spirit of cooperation and understanding.
- Our vision is to develop not only well-rounded learners but also responsible citizens who contribute positively to the many communities we are a part of.
- Together, we have built a warm and welcoming school community where we strive for every individual to feel valued, supported, and inspired to reach their full potential

Our Core Values – as voted for by families, staff and pupils


FRIENDSHIP



'Encourage one another and build each other up.'

1 Thessalonians 5:11


RESPECT



'Do to others as you would have them do to you.'

Matthew 7:12


TRUST



'My God is my strength in whom I trust.'

Psalms 124:8

The Aston Way – High Five Rules

- “Be courageous, stay on task, be kind, be fair that’s all we ask. Respect for all, shine so bright, high-five rules we’ll do what’s right”



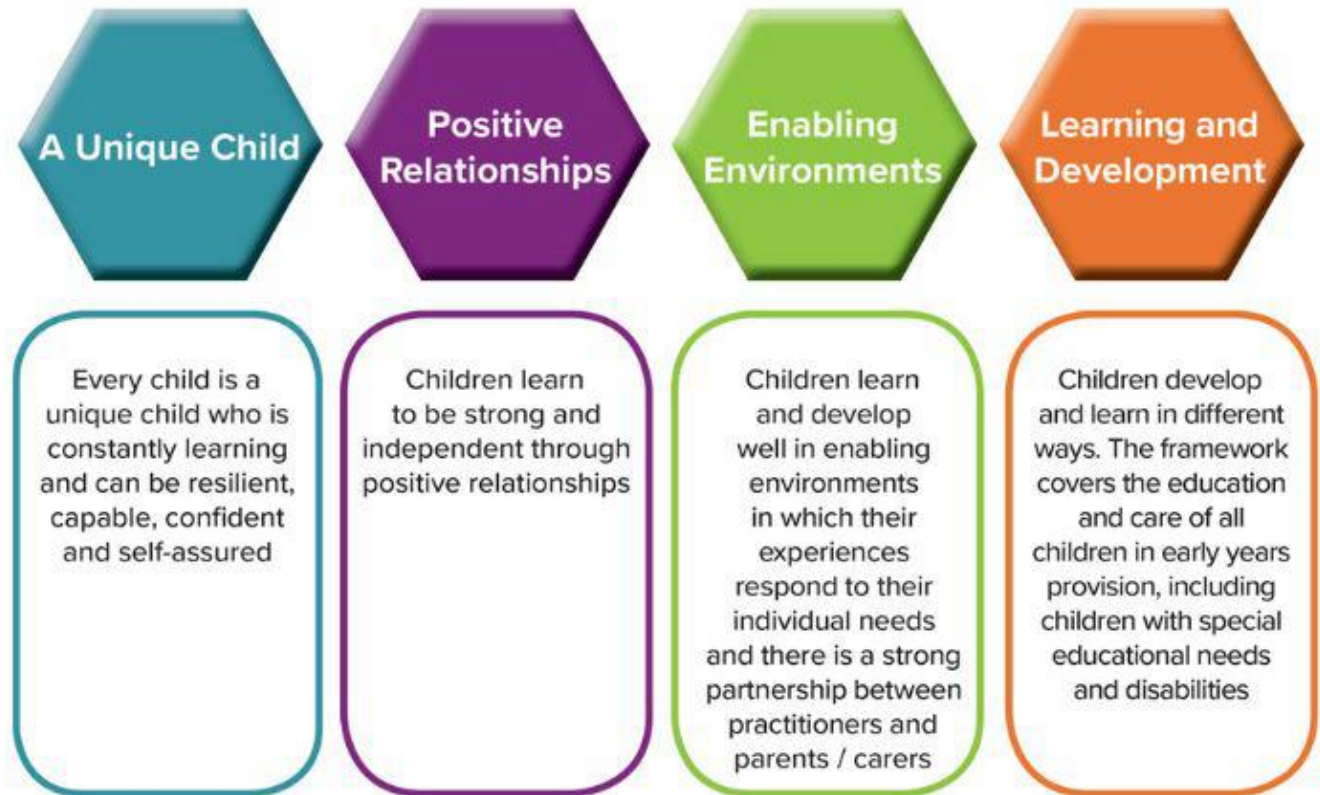
Attainment

Measure	School 2024 cohort	National 2024	Internal data 24-25	National 2025
FS2 GLD	80%	68%	71% >	69%
Y1 Phonics	86%	80%	94% >	80%
Y2 R (Exp)	70%	71%	71% -	71%
Y2 W (Exp)	50%	62%	64% >	63%
Y2 M (Exp)	77%	71%	89% >	72%
Y2 RWM (Exp)	50%	57%	61% >	58%
Y6 R (Exp)	63%	74%	83% >	75%
Y6 W (Exp)	73%	72%	83% >	72%
Y6 M (Exp)	73%	73%	79% >	74%
Y6 RWM (Exp)	57%	61%	76% >	63%
Y5 RWM (Exp)	74%		56%	
Y4 multiplication check- mean average score (out of 25)	24.1	20.6	24.6 >	21.3
Y4 multiplication check % pupils who scored 25.	65%	34%,	77% >	40%

Curriculum

- Early Years Foundation Stage Framework
- National curriculum

The Four Guiding Principles of the Early Years Foundation Stage






A typical day

- Gates open at 8.40
- Classroom doors open at 8.45
- Registration
- Assembly
- Early Years pupils then engage in planned learning through play opportunities both indoors and out
- EYFS children work in groups on adult led, hands on activities to lay the foundations for year 1 (phonics, early writing, maths & knowledge of the world)



Year 1 onwards...

- After assembly complete group phonics/reading sessions
 - Writing
 - Break time (including time for a healthy snack from home)
 - Maths
 - Lunch time *
 - Foundation subjects (history, geography, art, DT, PE, RE, PSHE, music, science, Spanish, Computing)
 - Daily mile
 - Foundation subjects
 - Story time
 - Home time 3.15pm
- 

PERSONAL DEVELOPMENT AT ASTON ALL SAINTS C OF E

Growing Together: Personal Development

By the end of their Aston All Saints school journey children will know how to develop their character and contribute positively to society.

Personal development means learning new skills and growing as a person. School helps us become confident and independent. This includes learning about our feelings, friendships, and respecting others. It helps us to build our character and prepare for life outside of and following school.

School provides support to help us stay healthy, both in body and mind. Learning about healthy eating and exercise is important. We also learn how to handle our emotions and build good relationships with our friends and families. A healthy mind helps us learn better (spiritual, moral, social and cultural development).

Every pupil has unique talents and interests. School offers activities like sports, music, and art to help us explore these. When we find things we enjoy, we can grow our skills and use them to express ourselves and contribute to our school community.

It's important to learn about British values such as democracy and respect for others. This helps us understand how our society works and why we should treat everyone equally. We learn to appreciate differences and celebrate the things we share with each other.

We learn that understanding protected characteristics & that healthy relationships are built on trust and respect. School teaches us how to make friends, solve problems, and communicate well. Understanding feelings and respecting boundaries helps us keep our friendships strong and safe.

Understanding personal development helps in many careers. For example, teachers support students in building confidence and skills for life. Healthcare professionals promote wellbeing and teach healthy living. Community workers engage with diverse groups to ensure everyone is respected and valued. Each of these careers aims to help individuals and communities grow and thrive.

PERSONAL DEVELOPMENT EARLY YEARS

Build a den

1



2

Birdwatch

Go on an
autumn walk

3



4

Plant seeds and
watch them
grow

Post a letter

5



6

Dance in the
rain

Taste new
foods

7



8

Watch frogs
grow

Dress up

9



10

Fundraise

Meet a
firefighter

11



12

Hatch out
chicks

PERSONAL DEVELOPMENT
KEY STAGE 1

- 1 Explore our pond 
- 2 Visit a museum 
- 3 Lead a family service
- 4 Make a shelter for a small creature
- 5 Make and taste something new 
- 6 visit our local church 
- 7 Learn a poem of by heart
- 8 Watch butterflies grow
- 9 Learn a Spanish song 
- 10 Trial being in a rock band 
- 11 Dance with a west end performer 
- 12 Visit a tropical butterfly house 

PERSONAL DEVELOPMENT
LOWER KEY STAGE 2

- 1 Lead a church service
- 2 Explore a cave 
- 3 Play the recorder 
- 4 Make a sculpture 
- 5 Take part in a debate
- 6 Attend a disco 
- 7 Visit an aquarium 
- 8 Learn to swim
- 9 Take part in a sporting competition
- 10 Be a reading ambassador 
- 11 Nurture an insect habitat & release these into the wild
- 12 Support a charity

PERSONAL DEVELOPMENT
UPPER KEY STAGE 2

- 1 Visit a wildlife park
- 2 Prepare and cook soup 
- 3 Make a model solar system 
- 4 Make paper
- 5 Contribute to school council
- 6 Be a playleader 
- 7 Visit Crucial Crew
- 8 Learn bike ability skills 
- 9 Go on a residential 
- 10 Meet an inspirational athlete
- 11 Take part in an enterprise project 
- 12 Stage a production 



Wider curriculum

Visits, visitors, sports, swimming, music lessons





Aston All Saints Primary School Organised by the PTA

RAISING MONEY FOR OUR SCHOOL OUTDOOR PROVISIONS

2024 CHALLENGE

We are asking all children to try and raise **£20.24**. However you can! Joint sibling entries are welcome.

SMALL PRIZE FOR TAKING PART & TROPHY FOR THE CLASS THAT RAISES THE MOST

> THE CHALLENGE IS YOURS... A SPONSORED WALK, BAKE SALE (NUT FREE), READING CHALLENGE - WHAT WILL IT BE? DECIDE AS A CLASS OR FOR YOURSELF

DEADLINE 1ST MARCH FOR EASE PAY FUNDS TO: FRIENDS OF ASTON ALL SAINTS PTA 16-00-30 19450804 REF: CHILDS NAME & YEAR GROUP OR CASH IF NEEDED



merry CHRISTMAS

DISCOS - WEDNESDAY 10TH DECEMBER

MUSIC, DRINK, HARIBO & LIGHT UP SNAP BAND FOR £4

TICKETS MUST BE PURCHASED IN ADVANCE ON ARBOR

KS2 DISCO Y3, Y4, Y5, Y6 - 3-4PM

KS2 children will change into party clothes at 2.30pm.
Staff will supervise the disco 3 - 4pm
children should be collected from classrooms at 4pm.

DISCO EYFS, Y1 & Y2 4.15 - 5.15PM

EYFS & KS1 children should return to reception at 4.15pm.
Staff will supervise the disco 4.15 - 5.15pm
children should be collected from classrooms at 5.15pm.

Strictly no snacks from home, no high heels and no mobile phone usage.



Family involvement



FAQs

- Uniform
- Church attendance
- Holidays & fines
- Wrap around care